

Kandid Image Generation Technique

High-fitness examples generated from Kandid using a variety of image generation methods (Veroni diagrams, fractal flames, and scalar/vector expressions). Flickr reference images are shown on the left of each row.



Other Techniques

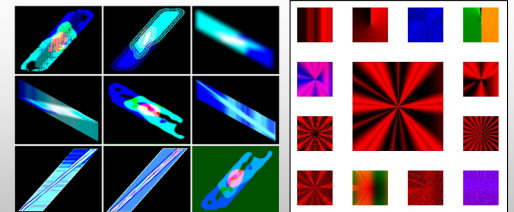
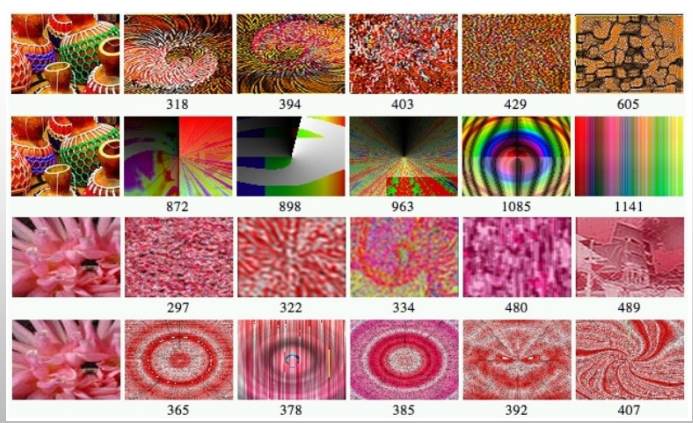


Image variety resulting from performing image perturbations using primitive image manipulation operations, such as Shear, Blur, HSV Adjust, and Brightness/Contrast

A small sample population of art in the Huxtable GA. Clicking a small square in the perimeter marks it with highest fitness and moves it to the center. Perimeter squares are then replaced with the next generation's children.



Sample generated images with high fitness. Two Flickr reference images are shown. Each pair's top row shows images generated via image perturbation operations. Each pair's bottom row shows images generated via the Huxtable genetic art program.



A few results of bucketized color count fitness function. In the top three rows, Flickr reference image appears in the center of each grid. In the bottom three rows, Flickr reference image is the first image on the left.